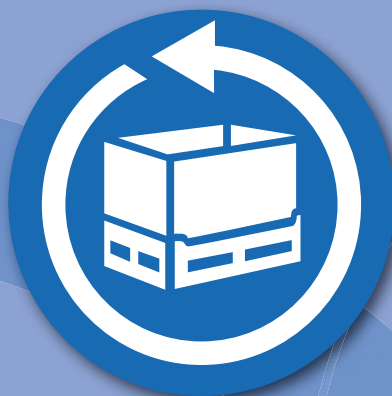




DRY



LIQUID



FIELD



CONTAINER POOLING AND LOGISTICS

CONTAINER POOLING AND LOGISTICS, a division of Reusable Transport Packaging, provides container pooling services specially designed for your company's needs; servicing automotive, food and beverage, consumer goods, general manufacturing, chemical, and pharmaceutical industries across North America. CONTAINERPAL provides a high quality, environmentally conscious, and more cost efficient alternative to manage your supply chain needs.

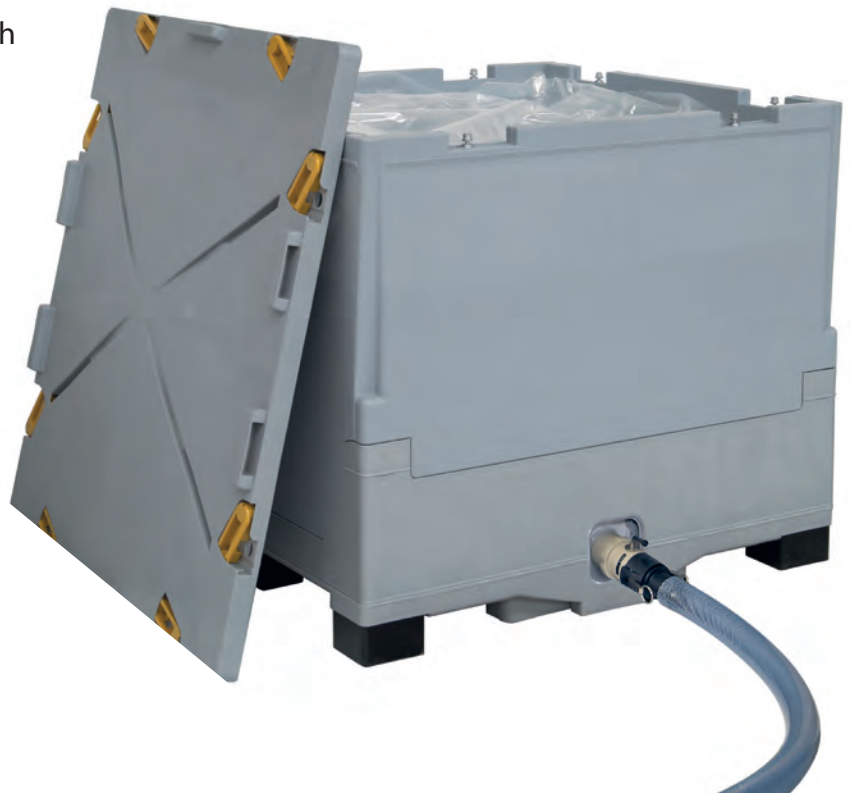
CONTAINERPAL's range of products and services are unparalleled. Our products include Dry Bulk Containers, Liquid Bulk Containers, Field Bins, RPCs, and Distribution Containers. Our equipment pools consist of the most cutting-edge containers in the industry and shared by many different customers. The use of our equipment pools allows customers to make a strategic business choice by reducing capital expenditures and improving the flow of their supply chain.

With an expert knowledge of Reusable Packaging and a commitment to offer superior customer service, CONTAINERPAL is geared to provide our customers with the best container services possible.

At CONTAINERPAL, our goal is to partner with progressive companies looking to create more sustainable supply chains that will increase their profitability and in turn have less impact on the environment.

CONTAINERPAL can help you improve your supply chain:

- Protect Products from Damage
- Add Efficiency in Operations
- Use Superior Packaging Products
- Spend Less Capital Throughout Supply Chain
- Utilize Repair Depots Across the Country
- Improve the Flow of Product
- Worker Safety
- Add Sustainability
- Standardize Packaging



DRY BULK CONTAINERS



Reduce
Waste



High Return
Ratio



Easy Set-up
and Collapse



Product
Safety



Our Dry Bulk Containers are used to transport intermediate bulk products up to around 2,500 lbs. Some of the industries we serve include Automotive, Aerospace, Consumer Goods, Chemicals, General Manufacturing, Moving and Storage.

At CONTAINERPAL we only offer the highest quality containers. Our Dry Bulk Containers are the best on the market with heavy duty construction that offers superior product protection and a high return ratio, which will greatly reduce return transportation costs. Experience the advantage and reap the benefits of a more efficient and sustainable supply chain without adding the extra expense.

Our standard container is a 48"x45" foot print with a height of 34". Other sizes are available upon request.

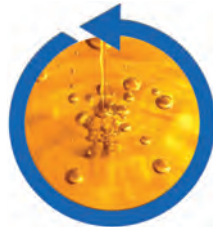
Exterior Dimensions	Length (A)	48"/1219.2 mm
	Width (B)	44.5" / 1130.3 mm
	Height (C)	34" / 863.6 mm
Interior Dimensions	Length (D)	44.3"/1125.2 mm
	Width (E)	41.6"/1056.6 mm
	Product Clearance	27"/685.8 mm
48" Side Drop Door Dimensions	Width	30.9"/784.7 mm
	Height	15.4"/391.2 mm
45" Side Wing-Style Drop Door	Width	N/A
	Height	N/A
Container Volume		28.9 ft3/0.81 m3
Container Capacity		1,800 lb/810 kg
Stack Height	Static / Dynamic	6 / 3
Tare Weight		125 lb / 56.2 kg
Collapsed Height		12.4" / 314.9mm
Return Ratio		2.9:1
48" Side Fork Opening Dims	Width (I)	10.2" / 259.1 mm
	Height (H)	3.4" / 86.4 mm
45" Side Fork Opening Dims	Width (I)	10.3" / 261.6 mm
	Height (H)	3.4" / 86.4 mm
Truckload Quantity (Collapsed)	53' with cover/no cover	252
Truckload Quantity (Open)	53' with cover/no cover	84
40' ISO Container (Collapsed)	Std. with cover/no cover	180
40' ISO Container (Open)	Std. with cover/no cover	60

All dimensions and specifications are approximate. Performance characteristics are based on uniform static loads and may be affected by distribution of load, handling methods, number and type of access doors and temperatures beyond the range of 0 F to 120 F.

LIQUID BULK CONTAINERS



Hygiene



Safety



Reusable &
Recyclable



Lower Packaging
Costs



Our Liquid Bulks are designed to ship intermediate bulk liquids up to 315 gallons or 3,300 lbs. Some of the industries we serve are food processing, beverage, dairy, cosmetic, edible oils, and non-hazardous chemicals.

CONTAINERPAL's collapsible liquid bulk container is different than most other fixed wall IBC's. Its collapsible design and replaceable liner give it a competitive edge over other products. Stackable up to five high the liquid bulk is highly space efficient.

Our standard liquid bulk container is a 48.6"x44.7" foot print with a height of 48". Other heights are available upon request.

Liquid Bulk Container		Spec	Metric Conversion
External Dimensions (Outside)			
Length		48.6"	1234.4 mm
Width		44.7"	1135.4 mm
Height		48.0"	1219.2 mm
Internal Dimensions (Inside)			
Length		44.9"	1140.5 mm
Width		40.9"	1038.9 mm
Useable Height		40.9"	1038.9 mm
Capacity			
Weight		3307 lbs.	1500 kg
Volume		315 gal.	1192.7 L
Other Features			
Collapsed Height		18.9"	480.1 mm
Tare Weight		225.0 lbs.	102.1 kg
Maximum Stack Height (Filled)		5	-
Lid Type		Locking	-
Shipping			
Return Ratio		2.5:1	-
53' Truck Capacity - Opened		56	-
53' Truck Capacity - Collapsed		168	-

* Minimum order required for Liquid Bulk Containers. Capacity is dependent upon application and use environment. Check with CONTAINERPAL for suitability in your application. Specifications subject to change without notice. All dimensions are approximate.

FIELD BINS



Return on
Investment



FDA-Approved



Protects
Produce



Exceptional
Durability

Our Field Bins are designed to harvest, store, and transport up to 20 bushels of raw produce or 1,500 lbs. Some of the industries we serve are citrus, watermelon, peppers, onions, potatoes, apples, as well as many others.

CONTAINERPAL offers both collapsible and fixed wall field bins. We offer several different size footprints and heights. The bins are all made from FDA approved material with smooth interiors for superior product protection.

Our standard field bin is a 48"x40" foot print with a height of 33". There are other sizes available upon request.



26-CP



34-CP

Model Number	Partial List of Applications	Outside Dimensions (L x W x H)	Inside Dimensions (L x W x H)	Volume Capacity (cu. in.)	Load Capacity (lbs.)	Tare Weight (lbs.)	Maximum Stack Weight (lbs.)	Fork Entry	Options
26-a-CP 26-b-CP 26-c-CP	Peaches, Pears, Apples, Citrus, Onions, Sweet Potatoes	47¾" x 47¾" x 28½"	44½" x 44¾" x 24"	49,603 (+/- 4%)	1,300	87.5	a. 12,000 b. 13,000 c. 15,000	2 way	Lid, Narrow Vents
34-CP	Apples, Onions, Sweet Potatoes, Carrots, Potatoes	44¾" x 48¼" x 34¾"	415/8" x 45¼" x 29¾"	56,100	1,300	SF-95 LF-96 CFS-100 CFL-101	a. 8,500 b. 9,500 c. 12,000	4 way	Lid



Field Bin

Load Capacity:	1,500 pounds
Volume Capacity:	47,000 cubic inches
Tare Weight:	105 pounds (no drop-down door) 106 pounds (1 drop-down door) 107 pounds (2 drop-down doors)
Maximum Stack Weight*:	11,120 pounds (no drop-down door; long term, ambient temperature) 8,896 pounds (1 drop-down door; long term, ambient temperature) 6,000 pounds (2 drop-down doors; long term, ambient temperature)
Molding Process:	High-pressure injection molding
Material:	Polypropylene, U.V. stabilized
Approval:	FDA-regulated material
Container Design:	Non-sequential folding walls and 10-point side wall zipper lock system for greater column and wall strength
Foot Design:	Five runner pallet base system with positive interlocking feet
Ventilation Slots:	1⅞" (L) x ⅝" (W) in sides and base; rounded surfaces on interior edges of slots
Fork Lift Entry:	Four-way: 3⅞" opening with curved fork entry to minimize fork damage
Graphic Card Holders:	Four available. Card size: 13" x 14½"
External Dimensions:	40" (L) x 48" (W) x 33" (H)
Internal Dimensions:	36¾" (L) x 44¾" (W) x 26⅞" (H)
Options:	Solid base and walls; Drop-down doors on one or both 48" walls for easy produce access; Printed pallet base color nameplate: 9¾" x 3⅞"; Customer identification with RFID tags

Notes: Dimensions assume tolerance of 1/4". Volume capacities assume tolerance of 5% and tare weights assume a tolerance of 4% unless noted otherwise. Ambient temperature approximately equal to 75° F. Data is subject to change.

1 Stack Weight = (weight of bin contents + tare weight of bin) X number of bins in stack

RPCs



Return on
Investment



FDA-Approved



Protects
Produce



Exceptional
Durability



Our RPCs are made to transport, handle, and merchandise fresh food shipments from farmers to retailers. Some of the industries we serve are broccoli, peppers, cucumbers, squash, asparagus, berries, corn, onion, garlic, mangos, citrus, as well as many more.

CONTAINERPAL offers vented collapsible RPCs. The low profile and high cube utilization of the container create maximum supply chain efficiency. As well, patented ventilation provides for rapid cooling of perishables. Large placard areas are located on all four sides of the crate for point-of-purchase displays.

Our standard RPC is a 24"x16" foot print with different heights from 5" to 11". There are other sizes available upon request.

Model	Outside Dimensions Inches, (cm)			Inside Dimensions Inches, (cm)			Collapsed Height Inches (cm)	Ratio Return	Capacity ft ³ (L)	Weight lb. (kg)	Quantity per Pallet (Full*)	Quantity per Pallet (Collapsed**)
	Length	Width	Height	Length	Width	Height						
SmartCrate®												
CP 6411	23.62 (60.00)	15.75 (40.00)	5.00 (12.70)	22.62 (57.46)	14.75 (37.46)	4.34 (11.02)	1.40 (3.56)	3.6 : 1	0.85 (24.04)	3.24 (1.47)	85	160
CP 6416	23.62 (60.00)	15.75 (40.00)	7.17 (18.20)	22.62 (57.46)	14.75 (37.46)	6.50 (16.51)	1.40 (3.56)	5.1 : 1	1.28 (36.31)	3.68 (1.67)	60	160
CP 6419	23.62 (60.00)	15.75 (40.00)	7.99 (20.30)	22.62 (57.46)	14.75 (37.46)	7.38 (18.68)	1.40 (3.56)	5.7 : 1	1.45 (41.15)	3.84 (1.74)	50	160
CP 6425	23.62 (60.00)	15.75 (40.00)	10.55 (26.80)	22.62 (57.46)	14.75 (37.46)	9.87 (25.08)	2.09 (5.31)	5.1 : 1	1.94 (55.08)	4.92 (2.23)	40	110
2413-10	24.50 (62.23)	13.30 (33.78)	9.60 (24.38)	23.50 (59.69)	12.30 (31.24)	9.00 (22.86)	2.10 (5.33)	5 : 1	1.51 (42.63)	3.90 (1.77)	48	110

* Full container stack height is based on a maximum pallet height of 90 inches.

** Collapsed containers are shipped on half high pallets which can be stacked 2 high on dry vans.

DISTRIBUTION CONTAINERS



Reduce
Waste



High Return
Ratio



Easy Set-up
and Collapse



Product
Safety



Our distribution containers are made to handle a range of important applications, merchandise shipping from warehouse to retail, general storage and transportation, as well as commercial and home moving. Office moves and storage for bank builds of small parts are made affordable and easy with a non-asset based hand held container solution. Some of the industries we serve are distribution, general merchandise, manufacturing, grocery, retail, moving and storage.

CONTAINERPAL offers nestable totes with attached lids. Ergonomic carrying handles are engineered for easier handling and the multi-finger lid design provides tamper-resistant security. Totes stack and nest for increased supply chain efficiency.

Our standard distribution container is a 27"x17" footprint with a height of 12". Other sizes are available at the customer's request.

Reusable Plastic Distribution Container Specifications

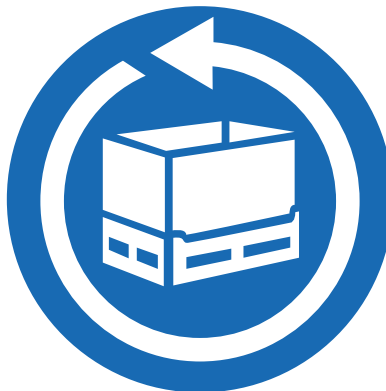
Model	Outside Dimensions				Inside Dimensions				Container Height	Product Clearance*	Volume (cu. ft.)	Weight (lbs.)
	Top		Bottom		Top		Bottom					
	L	W	L	W	L	W	L	W				
DCNA02-271712	27.2"	16.6"	24.5"	14.7"	25.1"	15.6"	23.4"	13.7"	12.5"	11.0"	2.50	8.11

Plastic Dolly Specifications

Model	Exterior Dimensions			Inside Dimensions		Color Height	Container Capacity	53' Truckload Quantity	Weight (lbs.)
	L	W	H	L	W				
DCD02-2717	28.5"	18.5"	6.5"	24.5"	14.7"	Black	500 lbs.	1,144	17 lbs.

CONTAINER POOLING AND LOGISTICS

CONTAINERS NOW



CONTAINERPAL
Container Pooling and Logistics
727-319-2300 Office
727-319-2399 Fax
sales@containerpal.com
www.containerpal.com